

Technical Instructions for Online Student Exam Registration

Below mentioned settings are recommended to access online Student Exam Registration application from applicant's computer

System Requirements

■ Hardware Requirements

- ▶ Recommended screen resolution 1024*768 pixels
- ▶ Minimum RAM: 1 GB, Recommended 2 GB

- ▶ 300 GB disk space available
- ▶ 2 GHz Intel Core 2 Duo processor or higher

■ Internet Connectivity

- ▶ Minimum speed of Internet connectivity required 1 Mbps

Software Requirements

PC: Windows® Vista/7 operating system with one of the following browsers:

- ▶ Internet Explorer (IE) 8
- ▶ Mozilla Firefox version 30.0 or later
- ▶ Turnoff pop-up blocker in browser

How to turnoff pop-up blocker in Mozilla Firefox

1. Start Firefox
2. Go to the Tools menu and click on "Options" Now option window will be opened
3. Click on Content Tab



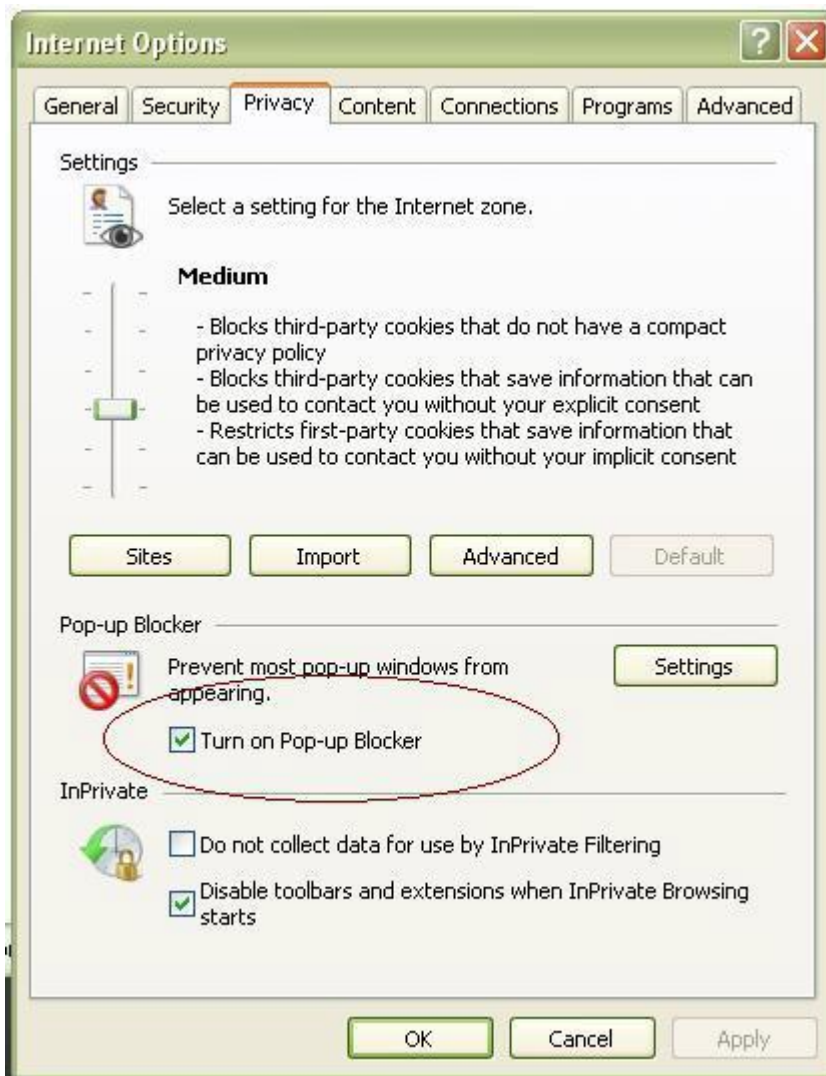
4. To turnoff all pop-ups just uncheck the "Block pop-up windows" box.
5. Click "OK"

How to turnoff pop-up blocker in Internet Explorer

1. Go to the Tools menu and click on "Internet Options"



2. Now option window will be opened
3. Click on "Privacy"



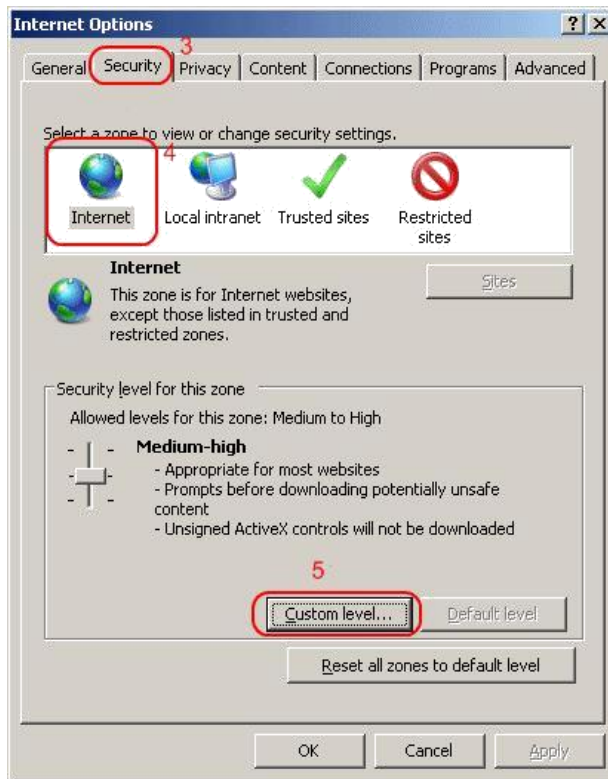
4. To turnoff all pop-ups just uncheck the "Block pop-up windows" box.
5. Click "OK"

▶ Enable Java Script in browser

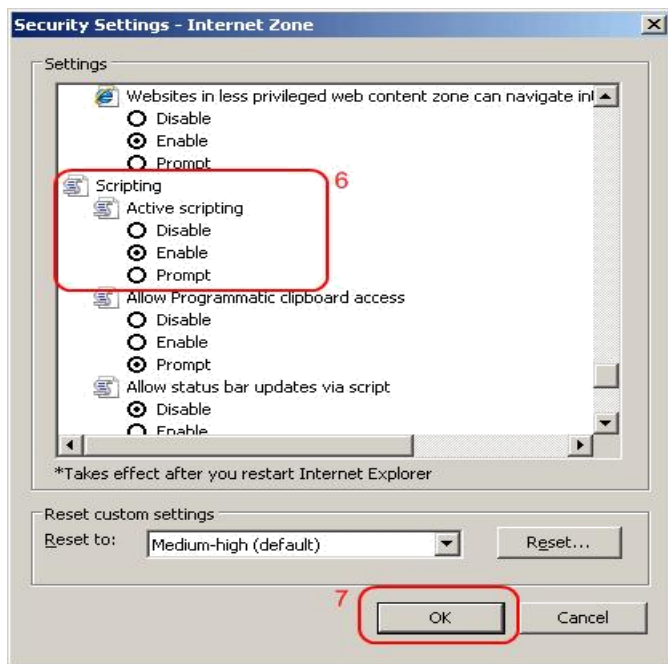
■ **How to Enable Java script in Internet Explorer**



3. Click **Security**
4. Click **Internet**
5. Click **Custom level...**



6. Scroll down to **Scripting** and select the radio button to **Enable** or **Disable** it. You may also opt for IE7 to **prompt** you to allow scripts to run.

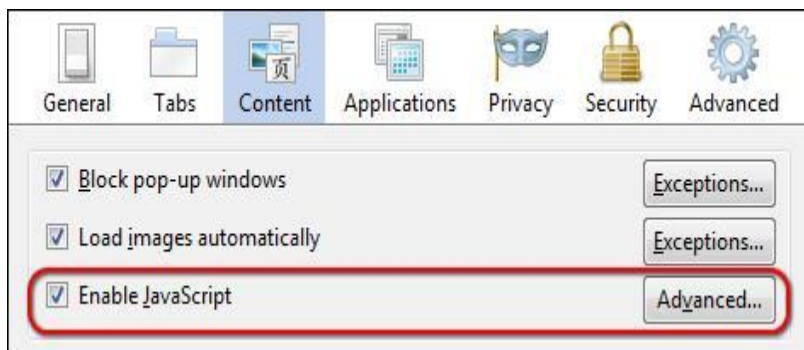


7. Click **OK**, then **OK** again.

JavaScript should now be enabled or disabled in Internet Explorer 7.

■ How to enable Java script in Mozilla Firefox

1. At the top of the Firefox window, click on the Tools menu, and select Options...
2. In the Options window, select the Content panel.
3. **Enable JavaScript:** Select this option to permit JavaScript to execute on your computer.



1. Click OK to close the Options window

Know before applying

- ▶ **Applicant has to upload attachments while applying. Scanned the required attachments and save to either (.jpg, .jpeg) format. to upload Candidate's Picture and Candidate's Signature. Size \leq 5KB and Size \geq 20KB. Approx Dimensions : Width 100px, Height 120px**

Other Instruction for photograph

- 1. Photograph must be taken in a White or a very light background.**
- 2. Face should occupy about 50% of the area in the photograph, and with a full face view looking into the camera directly. The main features of the face must not be covered by hair of the head, any cloth or any shadow. Forehead, both eyes, nose, cheeks, lip, and chin should be clearly visible..**
- 3. Please do not upload Mobile phone photographs of Candidate.**
- 4. You must not wear spectacles with dark or tinted glasses, only clear glasses are permitted.**

Other Instruction for Signature

- 1. Please put your signature with a black or dark blue ink on a white paper.**
 - 2. Please do not upload Mobile phone photographs of signature.**
- ▶ **In case of Disability, Disability certificate needs to be attached. File format (.jpg, .jpeg) and Size \geq 20KB and size \leq 200KB.**
 - ▶ **In case of Student Other than GSEB or GSOS Board, Migration certificate and Equivalence Certificate needs to be attached. File format (.jpg, .jpeg) and size \leq 15 KB and Size \leq 100KB.**
 - ▶ **In case of Regular Student SSC Mark sheet needs to be attached. File format (.jpg, .jpeg) and size \leq 15 KB and Size \leq 100KB.**
 - ▶ **In case of Repeater Student HSC Fail Mark sheet needs to be attached. File format (.jpg, .jpeg) and size \leq 15 KB and Size \leq 100KB.**

- ▶ In case of Isolated I.T.I Student HSC Mark sheet, School leaving, I.T.I certificate needs to be attached. File format (.jpg, .jpeg) and size<= 15 KB and Size <= 100KB.
- ▶ In case of open school studentSSC mark sheet, HSC Mark sheet, Affidavit needs to be attached. File format (.jpg, .jpeg) and size<= 15 KB and Size <= 100KB.
- ▶ Photo, Signature, Certificate(s) or any other required attachment(s) must be adequately visible else can be rejected.

How to download User Guide

- ▶ Please download and read user guide carefully before apply online. To read guideline Adobe Reader 8 or above must be installed on your computer
- ▶ You can visit to view ONLINE Help at <http://hsceexamreg.gseb.org/>

 In case of any query please contact to GSEB.